

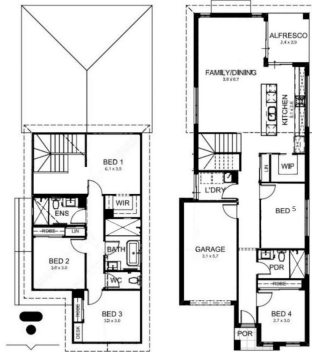


5 3 1

House Size 203m² Land Size 300.4m²

House Price \$527,800 Land Price \$640,000

Site Map



- 2.7m ceiling height on both floor
- Electric garage door with 2 remote
- Engineer specification slab
- Smart door lock
- Entry floor 1200x2400



- Tiling and Laminated timber flooring
- Skirting with glass balustrade (if applicable)
- Double Ducted Aircon



- Ceiling height tiling for bathroom
- Led Downlight
- 20L gas instant hot water system
- Square set finish in lieu of concrete
- Fixed Site cost included



- 40mm stone in Kitchen
- Rides with shelves, drawers and hanging space

Withheld Ingleburn Road Leppington NSW

5 3 1

This sensational 5 bedroom, 3 bathroom house and land package on Ingleburn Road, Leppington offers a rare blend of lifestyle convenience and incredible investment potential.

Building Size : 203 sqm
Land Size : 300.4 sqm
View : <https://www.icrealty.com.au/7972947>

Quality, Comfort, and Prime Location

Built by the trusted Patson Builders, synonymous with excellence

Enjoy a spacious 203 sqm floor plan on a generous 300.4 sqm lot

Premium inclusions and landscaping create a move-in-ready haven

Rest easy with a 2-year 5% rental guarantee for peace of mind

Leppington: Where Growth Meets Convenience



Laurence Han
(02) 8914 7918

Easy access to the train station and everyday amenities

