






29/8 Maida Road Epping NSW

1  1  1 

Premium living and prime location just 18kms from Sydney CBD, situated in Epping, a popular, leafy suburb north-west of Sydney. Lucille perfectly combines the attributes of a quiet street, brilliant fit out, great location and niche size 2-building complex.

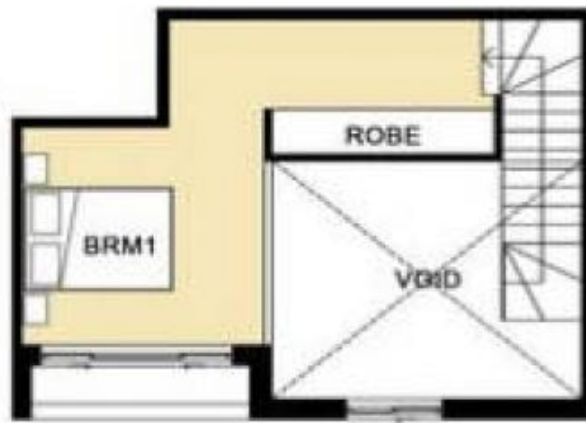
Beautifully appointed apartment with a stunning open floor plan: Quality kitchens with stone bench tops and stainless steel appliances, luxury bathrooms with free standing baths to impress. The bedrooms feature full length mirror doors on BIR's Balcony or courtyard spaces to choose from. The completed boutique style apartment has been designed for those who value design excellence, the complex offers the best in Epping living: leafy low-rise surrounds, proximity to amenity - town centre and schools, open plan living and quality inclusions.

Generous living areas flow seamlessly into the outdoor entertaining zone allowing you to take full advantage of the

Price : \$620,000
Building Size : 75 sqm
View : <https://www.icrealty.com.au/7888330>



Lin Zhao
(02) 89147918



MEZZANINE



LEVEL 2

