






201/66 Ashmore Street Erskineville NSW

3  2  1 

Rare North Facing 3 Bedroom apartment with 1 Car Space. Perfect layout with attractive Ashmore Street and a oval view in Park Sydney Stage Two. Set on level five of the new BOTANY building, generous walk-in robe in master bedroom with plenty of wisely designed storage spaces, this stylish designer apartment is located in the heart of this connected village precinct.

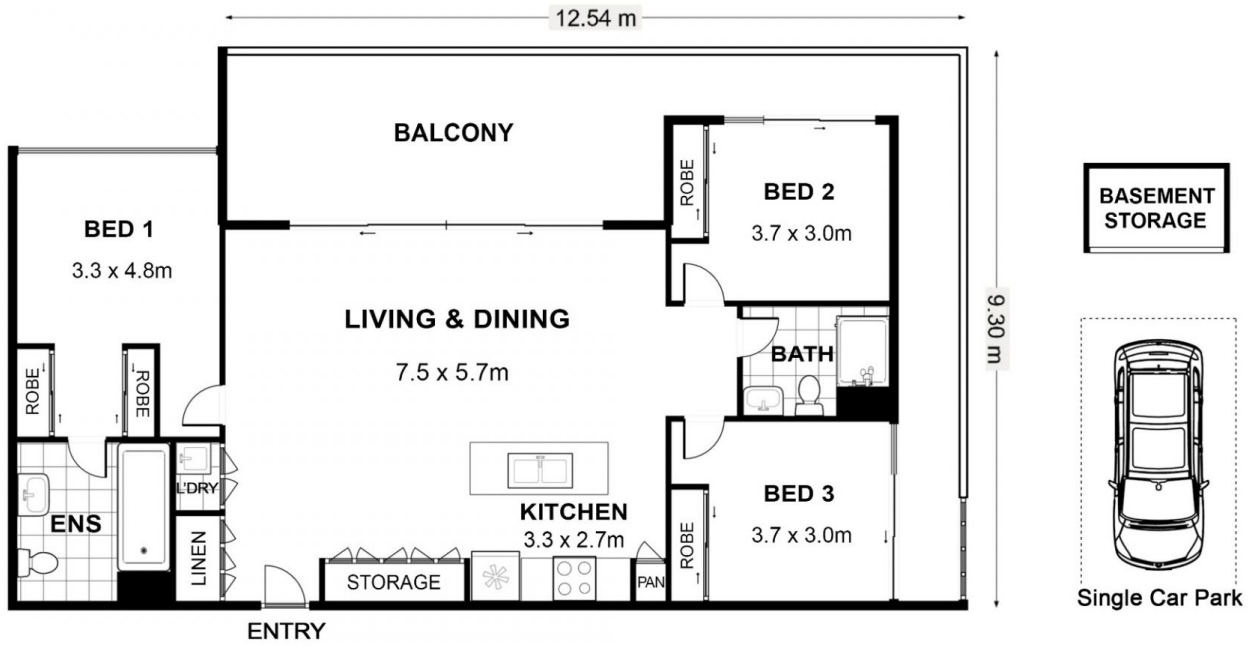
As Park Sydney's new Stage 2 building, BOTANY is the next exciting phase in Sydney's largest master planned community.

Park Sydney is at the forefront of the new Erskineville, an exciting up-and-coming neighbourhood, perfectly positioned just 4km from Sydney's CBD, and in easy walking distance to Newtown and Green Square.

View : <https://www.icrealty.com.au/7857282>



Lin Zhao
(02) 89147918



201/66 Ashmore st, Erskineville NSW 2043

Illustrated by 360estate.com.au. Scale in metres. Indicative only. Dimensions are approximate. All information contained herein is gathered from sources we believe to be reliable. However, we cannot guarantee its accuracy and interested persons should rely on their own enquiries.

