






**1115/6-8 Kingsborough Way Zetland NSW**

2  2  2 

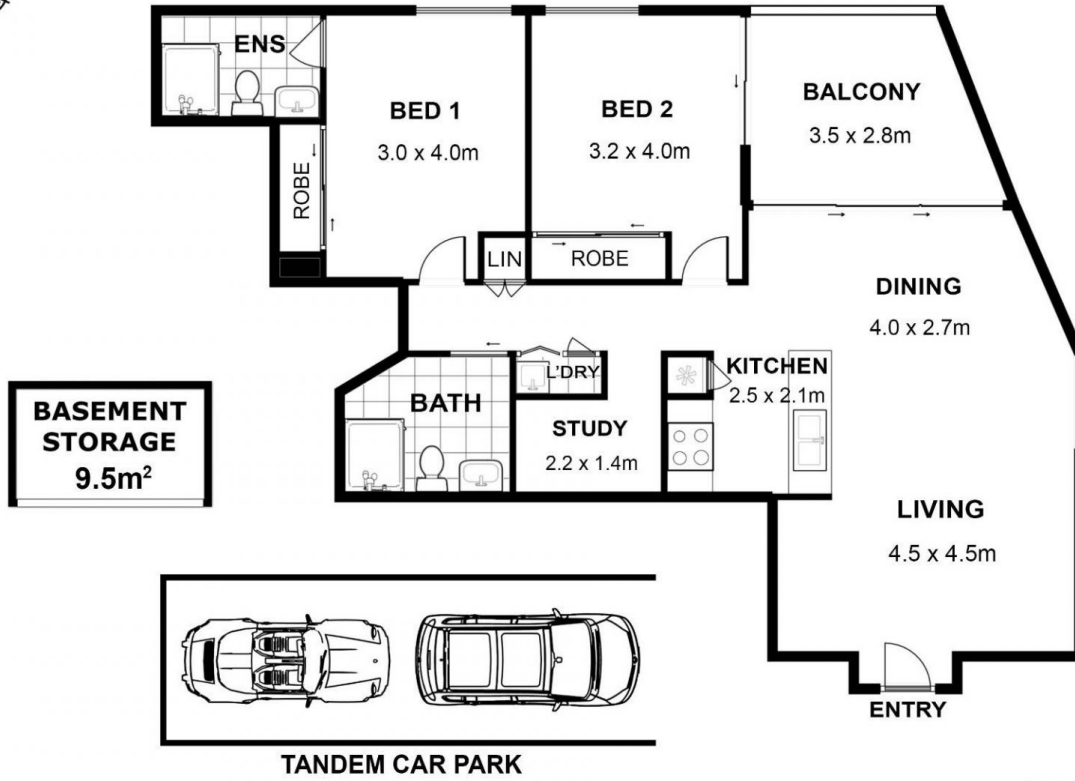
Located near the heart of Green Square, 'The Reserve' offers superb city lifestyle with just minutes' walk to Green Square Station, buses to Sydney CBD. 5mins walk to Woolworth, Mcdonald's, TacoBell and library. Zetland is moments from Green Square's new foodie hot spots including Rosebery's "The Cannery" featuring black star pastry, Three Blue Ducks & Whole foods, The Grounds of Alexandria and Waterloo's famous 'Danks Street' precinct.

**Price** : 1,050,000  
**Building Size** : 103 sqm  
**View** : <https://www.icrealty.com.au/7846496>

- Large bedrooms with built-in robes
- Master bedroom with oversized ensuite
- Beautifully appointed kitchen with built-in fridge
- Oversized undercover balcony ideal for entertaining
- Timber flooring throughout including bedrooms
- Semi-closed study area
- Internal laundry with dryer and storage
- Peaceful internal garden outlook



**Lin Zhao**  
**(02) 89147918**



1115/8 Kingsborough Way, Zetland NSW 2017

Illustrated by 360estate.com.au. Scale in metres. Indicative only. Dimensions are approximate. All information contained herein is gathered from sources we believe to be reliable. However, we cannot guarantee its accuracy and interested persons should rely on their own enquiries.

