





522/18 Epping Park Drive Epping NSW

2  2  2 

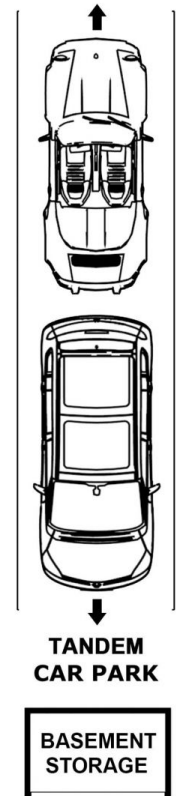
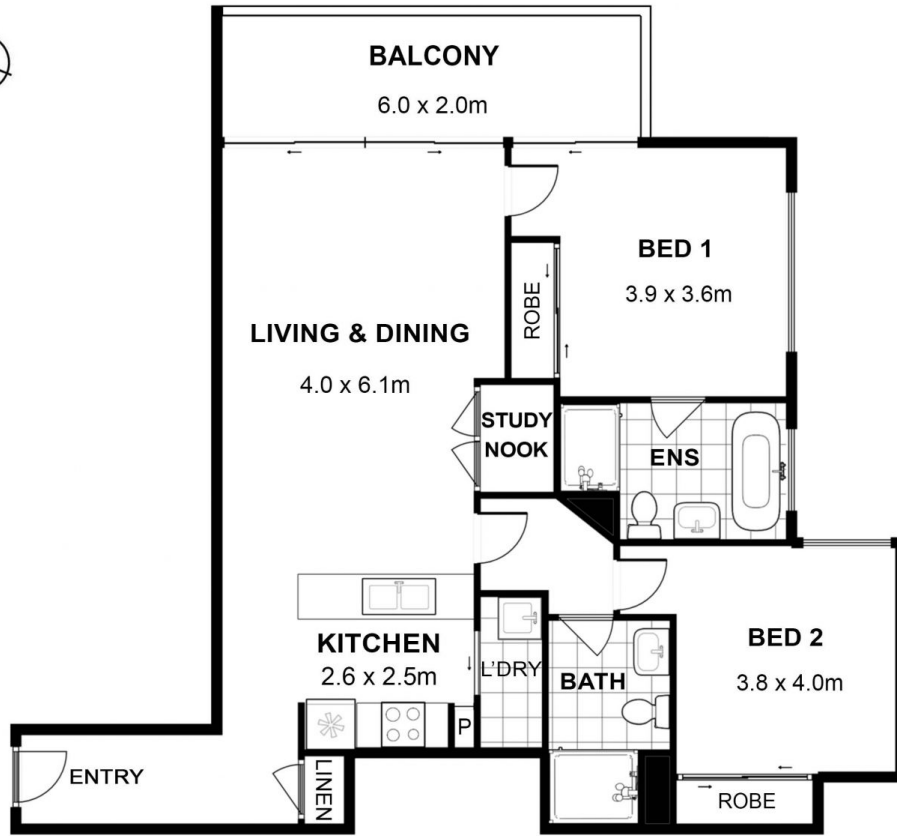
This elegant apartment, located within the Epping Park complex, offers a spacious and light-filled living environment with breathtaking views. The combined lounge and dining area is expansive and bright, featuring a skylight and sliding doors. The two bedrooms have access to east facing balcony and there is also a study nook that serves as a convenient home office space.

Situated in a prime location in Epping, this apartment is in close proximity to shopping centers and all essential amenities. Nearby, you'll find an array of cafes, restaurants, as well as verdant green spaces and prestigious golf courses. The complex itself is surrounded by picturesque bushlands and walking paths, and offers resort-style facilities including an indoor pool, gym, tennis court, and children's playground. It truly is a peaceful and private sanctuary, providing everything you need at your fingertips.

View : <https://www.icrealty.com.au/7846462>



Lin Zhao
(02) 89147918



522/18 Epping Park Drive, Epping, NSW 2121

Illustrated by 360estate.com.au. Scale in metres. Indicative only. Dimensions are approximate. All information contained herein is gathered from sources we believe to be reliable. However, we cannot guarantee its accuracy and interested persons should rely on their own enquiries.